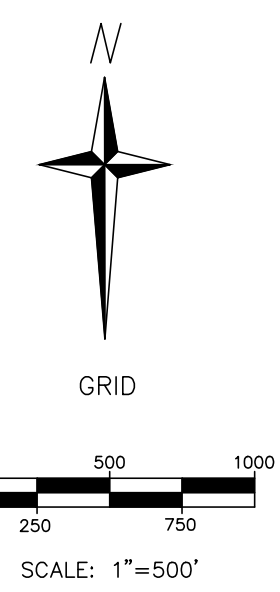


NEWBY HILLS RANCH

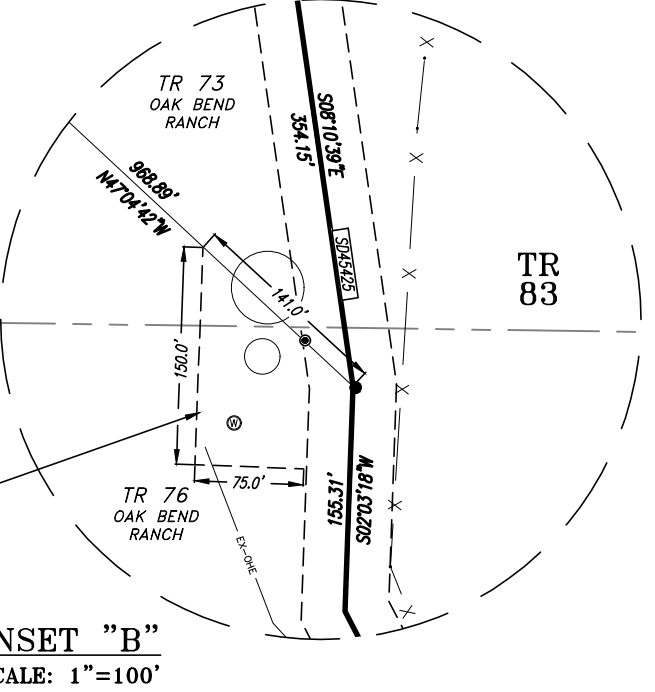


- LEGEND**
- FOUND 1/2\"/>
 - FOUND ROCK WOUND
 - SET 5/8\"/>
 - SET 5/8\"/>
 - SET 5/8\"/>
 - COURSE VALUE PER RECORD PATENT SURVEY OR DEED (DIRECT) (SINCE TO EXISTENT)
 - APPROX. PATENT LINE
 - PROPERTY LINE (P)
 - ALIEN PROPERTY LINE (A)
 - TRACE LINE
 - CONTOUR LINES
 - EASEMENT LINE
 - WIRE FENCE LINE
 - OVERHEAD ELECTRIC LINE
 - APPROX. FLOORPLAN "ZONE A"

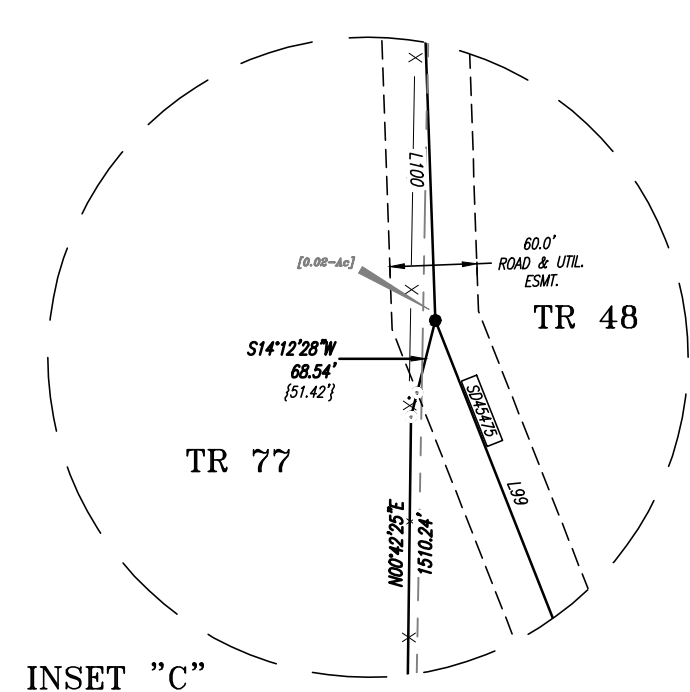
125/100' WATER WELL EASEMENT FOR USE OF TRACT 83 THIS PLAT. TRACTS 78, 80, 81, 82, 83 & DEVELOPER'S SUCCESSORS AND ASSIGNS

WATER WELL INTEREST: 2/3 INT. TR 83 1/3 INT. TR 78 (DOW GRID RANCHO) 1/3 INT. TR 79 (DOW GRID RANCHO) 2/3 INT. TR 80 (DOW GRID RANCHO)

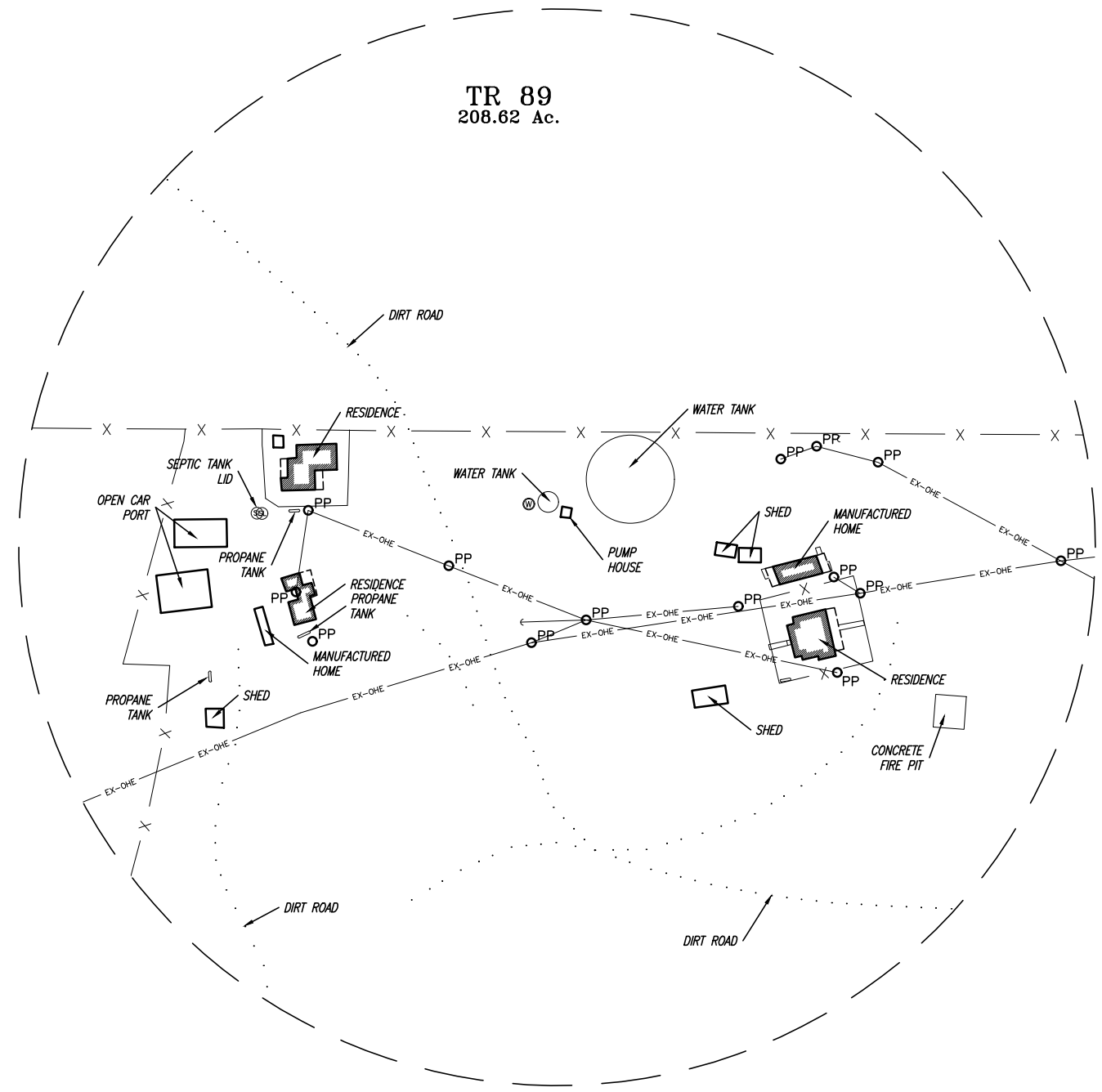
INSET "B"
SCALE: 1"=100'



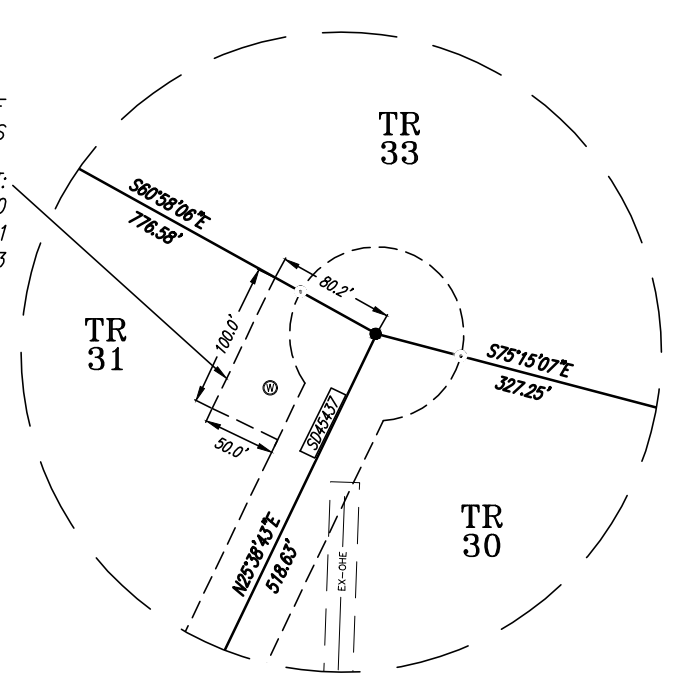
INSET "C"
SCALE: 1"=100'



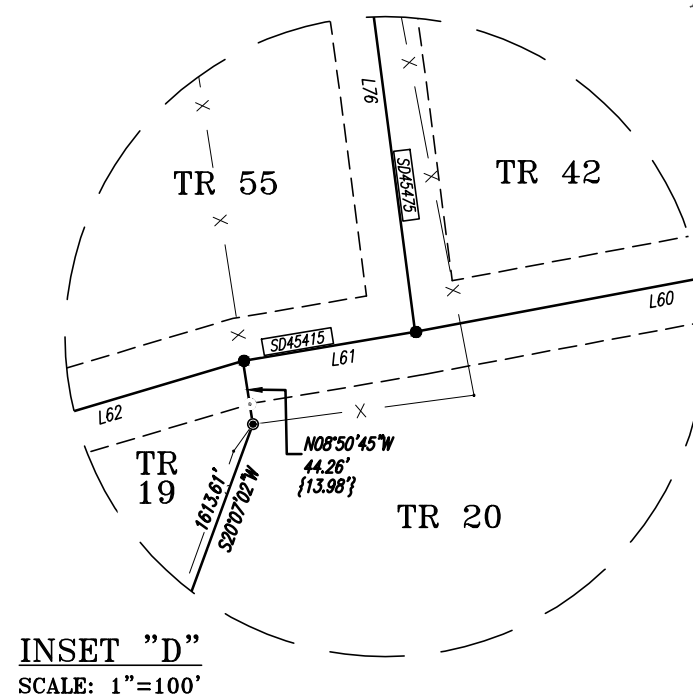
INSET "A"
SCALE: 1"=100'



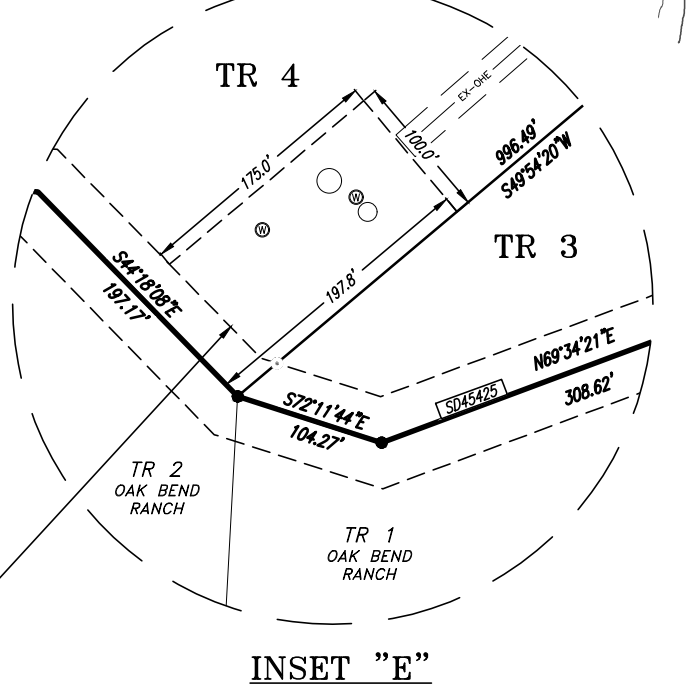
INSET "E"
SCALE: 1"=100'



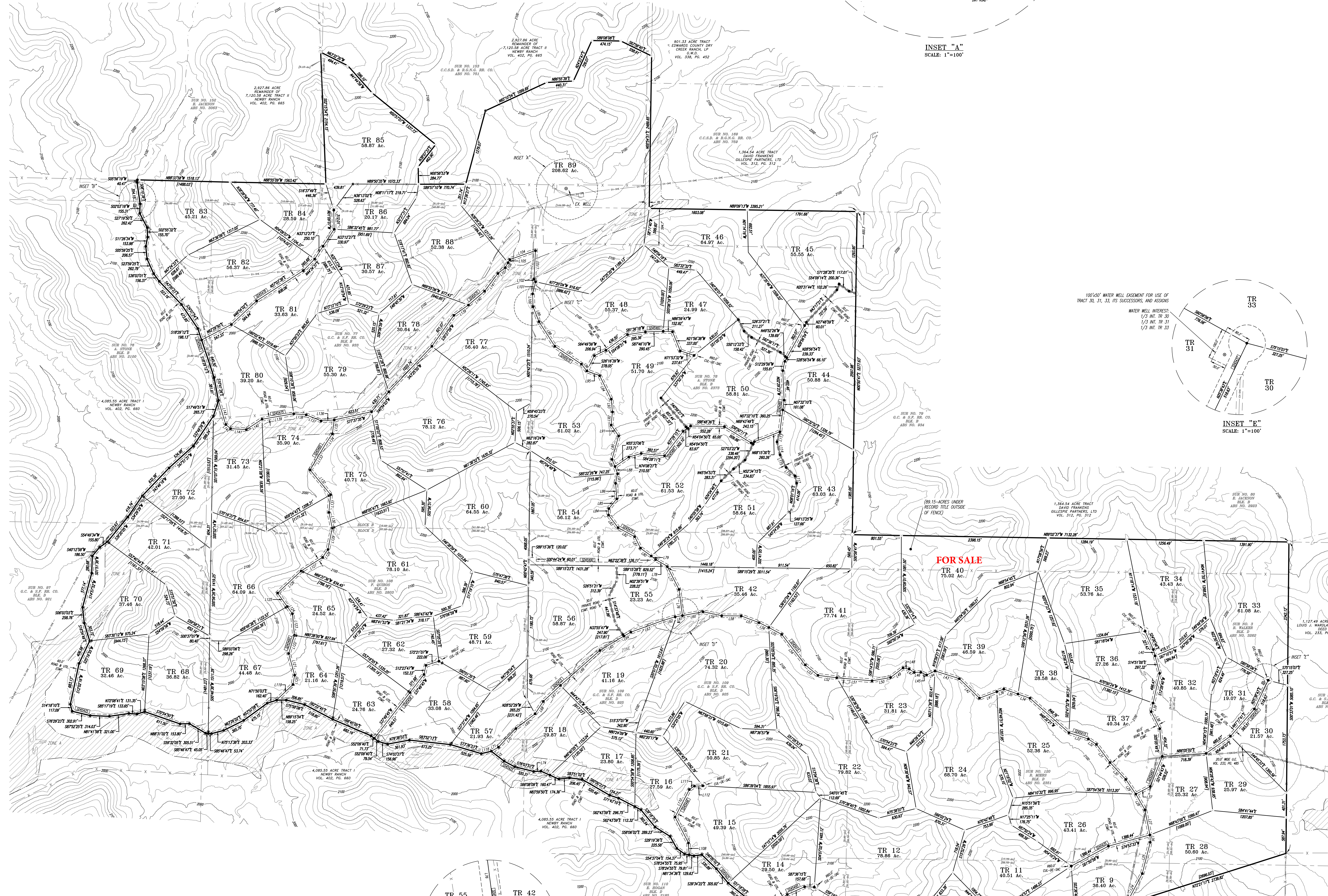
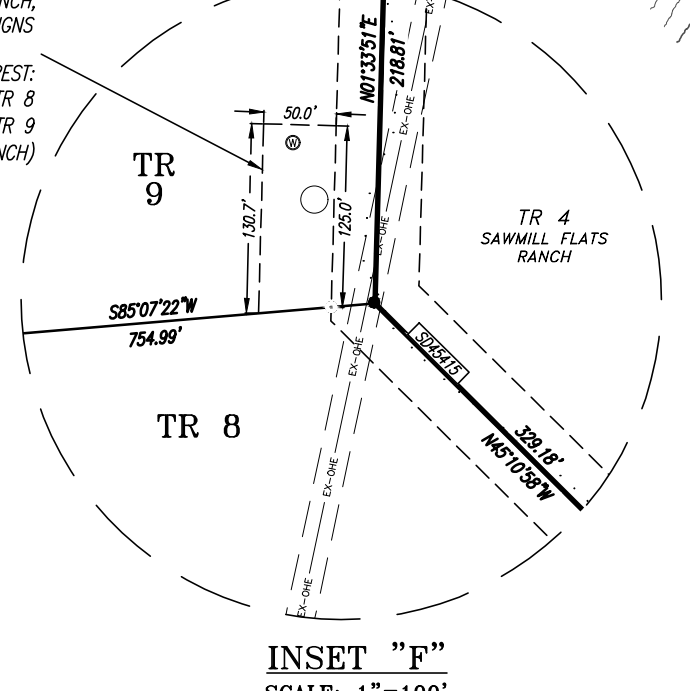
INSET "D"
SCALE: 1"=100'



INSET "F"
SCALE: 1"=100'



INSET "G"
SCALE: 1"=100'

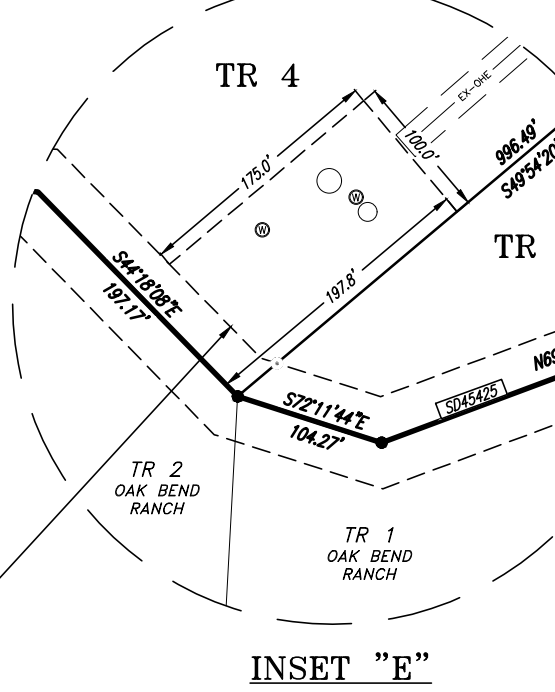


Line #	Length	Direction	Line #	Length	Direction	Line #	Length	Direction	Line #	Length	Direction
L1	178.57	N37°31'07"E	L38	311.57	S26°49'16"E	L75	160.47	S66°58'09"E	L112	137.16	S87°37'43"W
L2	125.19	N68°56'44"E	L39	143.18	S12°28'40"W	L76	431.08	N72°29'48"W	L113	171.11	S16°03'23"W
L3	152.14	N57°26'03"E	L40	106.08	S14°51'00"E	L77	429.18	N27°58'03"W	L114	217.03	N13°13'39"W
L4	157.21	N66°42'58"E	L41	303.27	S69°22'59"W	L78	214.92	N60°21'07"W	L115	228.29	N25°35'33"W
L5	182.90	N88°19'22"E	L42	457.73	N45°50'46"W	L79	91.78	N50°45'44"W	L116	200.45	N48°29'27"W
L6	277.86	S44°54'05"E	L43	417.02	N72°29'20"W	L80	217.31	N53°58'10"W	L117	122.01	S12°42'57"E
L7	199.98	S69°24'57"E	L44	150.73	S26°23'59"W	L81	210.80	N68°58'57"W	L118	169.00	N76°40'48"E
L8	168.39	N63°21'27"E	L45	104.07	N63°01'08"W	L82	307.60	N61°01'07"W	L119	368.94	S46°11'24"W
L9	53.74	S82°24'26"E	L46	106.43	S69°11'06"W	L83	259.48	N36°50'08"W	L120	154.37	S10°36'07"W
L10	129.84	S24°00'32"E	L47	100.47	N56°59'17"W	L84	104.59	N37°00'49"E	L121	367.70	S19°29'33"E
L11	201.48	S14°24'25"W	L48	100.81	N79°12'44"W	L85	205.67	N39°12'21"E	L122	311.09	S17°41'17"W
L12	127.87	S24°44'50"E	L49	257.32	S52°29'12"W	L86	255.81	N43°41'41"W	L123	354.82	S52°19'19"E
L13	203.42	S83°25'56"E	L50	307.00	S79°52'28"W	L87	159.81	N11°41'17"E	L124	143.54	S35°35'47"E
L14	207.94	N74°05'16"E	L51	578.68	N85°05'17"W	L88	125.80	N19°20'17"W	L125	271.20	S30°35'47"E
L15	105.64	S75°57'44"E	L52	309.93	N82°42'29"W	L89	126.46	N23°04'29"W	L126	525.74	S46°51'12"W
L16	151.73	N69°21'42"E	L53	287.76	N50°30'06"W	L90	397.10	N10°48'14"E	L127	416.99	S57°30'10"W
L17	204.01	S61°57'51"E	L54	430.30	N37°59'00"W	L91	216.02	N34°24'24"W	L128	154.77	S31°11'07"W
L18	152.07	S49°44'10"E	L55	238.87	N61°56'20"W	L92	215.20	N67°10'05"E	L129	328.72	S11°35'07"W
L19	101.60	S76°35'46"E	L56	177.72	N63°21'07"W	L93	208.69	N50°58'44"W	L130	260.79	S12°33'22"E
L20	130.77	N62°08'01"E	L57	311.30	N69°35'09"W	L94	428.00	N26°19'02"W	L131	291.80	S24°46'46"W
L21	104.27	S72°11'44"E	L58	318.80	N89°25'35"W	L95	223.32	N69°29'36"W	L132	523.47	S39°44'39"E
L22	197.17	S44°18'08"E	L59	311.66	N79°23'26"W	L96	141.33	N38°58'40"W	L133	488.13	S30°44'17"W
L23	128.30	S68°18'19"E	L60	341.90	S79°23'14"W	L97	522.58	N06°10'33"W	L134	205.92	S33°30'07"W
L24	565.35	N27°50'02"E	L61	120.37	S80°25'53"W	L98	479.86	N32°42'49"W	L135	228.56	S73°12'29"W
L25	527.36	N14°13'32"E	L62	213.50	S73°22'51"W	L99	265.40	N21°31'24"W	L136	215.44	S80°37'35"W
L26	119.67	N22°56'54"W	L63	552.96	S69°57'44"W	L100	208.68	N19°59'37"W	L137	263.02	N67°48'11"W
L27	418.27	N11°11'57"E	L64	219.37	S60°22'11"W	L101	300.73	N19°59'37"W	L138	203.38	N80°29'39"W
L28	296.98	N33°55'59"W	L65	346.74	S58°55'52"W	L102	150.80	N30°18'79"W	L139	523.81	S00°07'47"E
L29	290.40	N34°21'28"W	L66	850.80	S48°24'48"W	L103	466.06	N29°11'32"E	L140	290.42	S54°41'44"W
L30	377.88	N43°00'48"W	L67	382.92	S47°01'39"W	L104	443.99	S70°54'07"W	L141	308.31	S58°36'14"W
L31	369.64	N36°51'01"W	L68	242.68	S33°31'30"W	L105	59.10	S28°47'03"W	L142	347.65	S49°18'23"W
L32	158.58	N56°17'58"W	L69	395.09	S52°36'31"W	L106	93.12	S28°47'03"W	L143	362.79	S37°03'06"W
L33	333.99	N71°58'38"W	L70	416.66	S42°57'12"W	L107	150.01	S51°54'11"W	L144	103.85	N49°05'24"W
L34	207.90	N70°35'48"W	L71	134.21	S60°25'19"W	L108	194.41	S31°43'47"E	L145	410.40	N16°50'58"W
L35	245.64	N70°33'48"W	L72	263.98	S52°14'00"E	L109	476.26	S27°19'55"E			
L36	121.34	S69°22'59"W	L73	195.15	S62°08'08"E	L110	505.94	S27°28'12"W			
L37	267.05	S62°00'57"W	L74	117.81	N87°31'23"E	L111	100.05	S56°19'37"W			

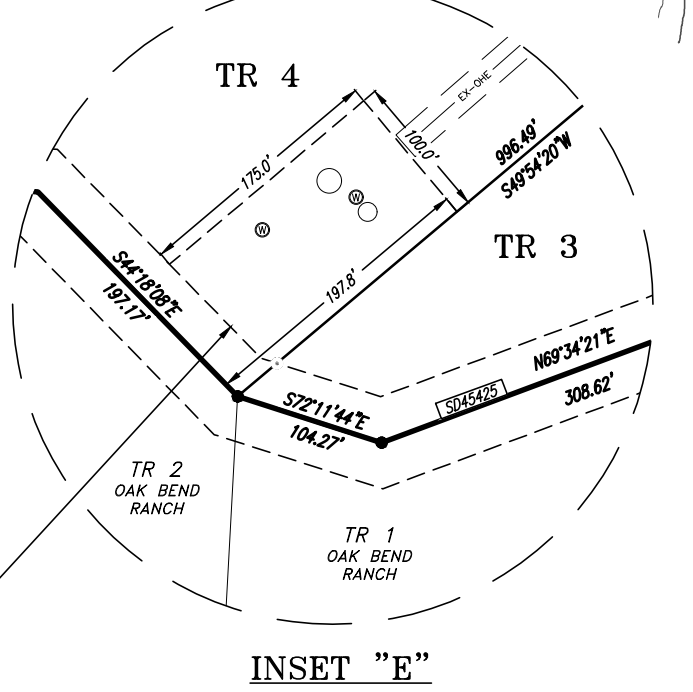
125/100' WATER WELL EASEMENT FOR USE OF TRACT 19 THIS PLAT. TRACTS 18, 19, 20 & DEVELOPER'S SUCCESSORS AND ASSIGNS

WATER WELL INTEREST: 2/3 INT. TR 19 1/3 INT. TR 20 (DOW GRID RANCHO) 2/3 INT. TR 18 (DOW GRID RANCHO)

INSET "D"
SCALE: 1"=100'



INSET "F"
SCALE: 1"=100'



INSET "G"
SCALE: 1"=100'

